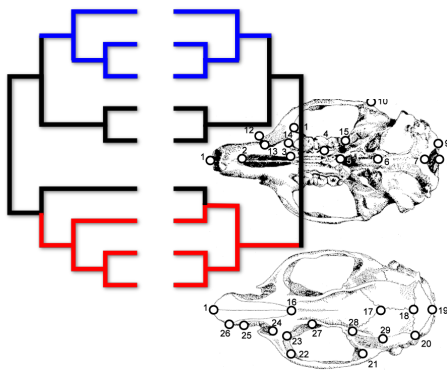


# GEOMETRIC MORPHOMETRICS LABORATORY FOR SYSTEMATICS AND EVOLUTIONARY RESEARCHES

February 1-5, 2010  
Pesche (IS), Italy



Università degli studi del Molise

Dipartimento S.T.A.T.

Scienze e Tecnologie per l'Ambiente e il Territorio

## Schedule

### Monday

- Opening
- PCA, PLS, Classification

### Tuesday

- Allometry
- Semilandmarks on curves and surfaces

### Wednesday

- Asymmetry analysis
- Phylogeny and comparative methods

### Thursday

- Spatial data in geometric morphometrics
- Evolutionary phenotypic trajectories: evolutionary convergence and parallelism
- Methods for quantifying and comparing rates of phenotypic evolution using a phylogeny

### Friday

- Ontogeny, phylogeny and geometric morphometrics
- Shape, function and phylogeny
- Finite element modeling

## Lecturers

**Dennis Slice**

Florida State University

**Dean Adams**

Iowa State University

**Anna Loy**

Università del Molise

**Andrea Cardini**

Università di Modena e Reggio Emilia

**Paolo Piras**

Center for Evolutionary Ecology

**Pasquale Raia**

Università degli Studi di Napoli "Federico II"

**Luciano Teresi**

Università degli Studi di Roma "Roma Tre"

### Organizing committee

Anna Loy, Paolo Piras, Tassos Kotsakis, Paolo Colangelo, Vincenzo Viscosi

